



High Productivity, High Versatility

- Scan rate up to 60 PPM / 120 IPM (300 dpi in color, gray, or B&W)
- Ultrasonic multi-feed detection
- Professional bundled software applications include Avison Button Manager 2, AvScan 5.0, PaperPort SE 14

A large LCD display 128x 32 dots (16*4 characters)

- Reverse roller technology delivers outstanding feeding reliability
- Robust 100-page Automatic Document Feeder (ADF)

- Press and paste your image directly to your text editor such as Microsoft Word

- Press and convert your image text to editable text and paste the text to your text editor such as Microsoft Word

- Press and scan to cloud servers including Google Docs, Microsoft SharePoint, or FTP via Button Manager V2

Fast, Powerful, yet Simple

Speed and reliable. It's your top priority. You don't have time fiddling with the scanner. You just want to get the job done - fast, with bare minimum amount of time and effort. Now you can, with the Avison AV280, scan at blazing speeds of up to 70 pages per minute or 140 images per minute at 200 dpi in either black and white or color mode. The Avison AV2800 is not only fast but it is also more reliable, with a 6,000 recommended daily duty cycle. The Avison AV2800 can handle up to 100 sheets per batch operation and obtain high image quality based on the advanced CCD optical scanning technology at 600 dpi resolution.

A Large LCD Display



The AV280 is easy to use through the enhanced LCD display which allows 128x 32 dots (16*4 characters). By selecting your destination and pressing the "Scan" button, the scan can be done and the scanned image can be sent to your specified destination application such as e-mail, printer, or your favorable image-editing software application. Up to nine frequently used scan settings and destinations can be preset for different scanning needs.

Reverse Roller Technology Enhances Feeding Reliability

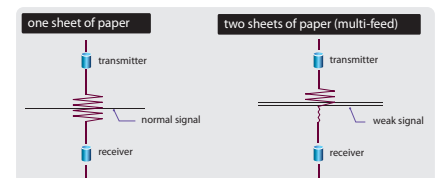
Equipped with the innovative reverse roller technology for advanced paper separation, the AV2800 delivers outstanding feeding reliability for an even a wider variety of document types and weights.

Paperweight and Paper Protection Features

New features such as "Paperweight" and "Paper protection" are implemented in the TWAIN interface to protect valuable paper by stopping the scan process once a skewed page is detected and enhance the document feeding capability by reducing the risk of a skewed document or a paper jam.

Ultrasonic Multi-Feed Detection

With the built-in ultrasonic multi-feed detection capability, the scanner allows you to set overlapped paper by detecting paper thickness between documents. When multi-feed is detected a warning message will be prompted.



What we have bundled

The Avison AV2800 scanner comes with TWAIN and ISIS drivers and are also bundled with full version of exclusive Avison AV Scan, Button Manager and ScanSoft PaperPort SE 14 software application.

Avision AV2800 Sheetfed Scanner

Avision's Button Manager V2

-Completes your scan with a single step



The Button Manager V2 main screen

Button Manager V2 makes it easy for you to scan and send your image to your favorite destinations with a press one button. Now the new version comes with an innovative feature to let you scan and automatically upload the scanned document to popular cloud repositories such as Google Docs, Microsoft SharePoint, or FTP. In addition, the iScan feature allows you to insert the scanned image or recognized text after optional OCR (Optical Character Recognition) process to your text editor such as Microsoft Word to get your job done easily and quickly.

AvScan 5.0

-The Intelligent Document Management Tool



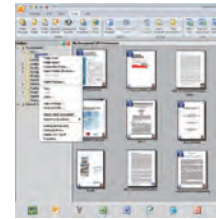
The AvScan 5.0 main screen

Document Imaging is the very first step of Document Management. However, poor quality images can cause serious problems to later indexing or storing processes. It may increase scanning labour costs and lowers the OCR accuracy. AvScan 5.0 ensures all documents are checked and polished at the time they are scanned such that the image quality is guaranteed before they are ready to use for other purposes.

AvScan 5.0 is an intelligent scanning and electronic filing solution. AvScan 5.0 possesses distinct features that convert and index scanned information into electronic documents for easy storage and fast retrieval.

PaperPort SE14

- The Professional Choice to Organize and Share Your Documents



The PaperPort SE14 main screen

PaperPort SE 14 is Nuance's most popular scanning and document management solution, carefully designed specifically for home office use. Part traditional file cabinet, part digital-document desktop, PaperPort SE 14 is the fastest and easiest way to scan, share, search, and organize your documents. Additionally, PaperPort SE 14 now delivers anytime-anywhere access to your most important files however it's convenient for you – using a PC, Mac, iPhone, iPad, or Android device.

Avision AV2800 Product Specifications

Paper Feeding:	ADF 50-page capacity with flatbed
Scanning Technology:	CCD
Light Source:	LED
Card Thickness:	Up to 1.25 mm
Long Page Mode:	118" (300 cm)
Document size (ADF):	Max. 216 x 356 mm (8.5" x 14") Min. 52 x 74mm (2" x 2.9")
Document Size (Flatbed):	Max. 222 x 356 mm (8.5" x 14")
Scanning Speed:	60 PPM /120 IPM (Color, 300 dpi)
Paper Thickness:	28~400 g/m ² (7~54 lbs)
Optical Resolution:	600 dpi
Output Resolution:	75, 100, 150, 200, 300, 400 and 600 dpi
Output Formats:	B/W, greyscale, 24-bit color
Bundled Software:	Avision Button Manager V2 Avision AvScan 5.0 PaperPort SE 14
Interface/Drivers:	USB 2.0 / TWAIN , ISIS
Power Supply:	Input: 100~240 VAC, 50/60 Hz Output: 24V, 2A
Power Consumption:	<58 W
Environmental Factors:	Operating temperature: 10°C to 35°C (50°F to 95°F) Operating humidity: 10% to 85%
Acoustical Noise:	Standby: <45 dB Operating: <50 dB
Dimensions (W x D x H):	649 x 318 x 317 mm (25.5" x 12.5" x 12.4")
Weight:	8.2 kg (18.1 lbs)
Recommended Daily Scanning Volume:	Up to 6,000 pages
Multi-feed Detection:	Ultrasonic

System Requirements

- Pentium 4 or higher
- Windows XP/2000/Vista/7
- 128MB RAM (256MB RAM for Windows XP)
- CD-ROM drive
- USB port

Contents

- AV2800 scanner
- Power Supply
- USB 2.0 Cable
- CD-ROM includes:
 - Scanner Driver (TWAIN/ISIS Driver)
 - Avision AVScan
 - Avision Button Manager
 - ScanSoft PaperPort 11SE



Button Manager



PaperPort 11SE



Avision

www.avision.com

No. 20, Creation Rd. I
Hsinchu Science Park 30077, Taiwan
Tel: 886-3-5782388 Fax: 886-3-5777017

Avision Europe GmbH
Borgschenweg 60-68
D-47239 Duisburg
Tel: +49 2151 56981 40
Fax: +49 2151 56981 42
info@avision.de

The Avision scanners come with TWAIN and ISIS-compatible drivers.
Avision Button Manager scans your documents directly to Adobe certified searchable PDF file!
The registered brand names and product names mentioned in this document belong to each respective holder.
Energy Star name and marks, registered marks owned by the U.S. government
The information contained in this document(s) is subject to change without notice.